



# GMT MONTHLY MEMBERSHIP PROGRESS REPORT

Results as of: 6/30/2017

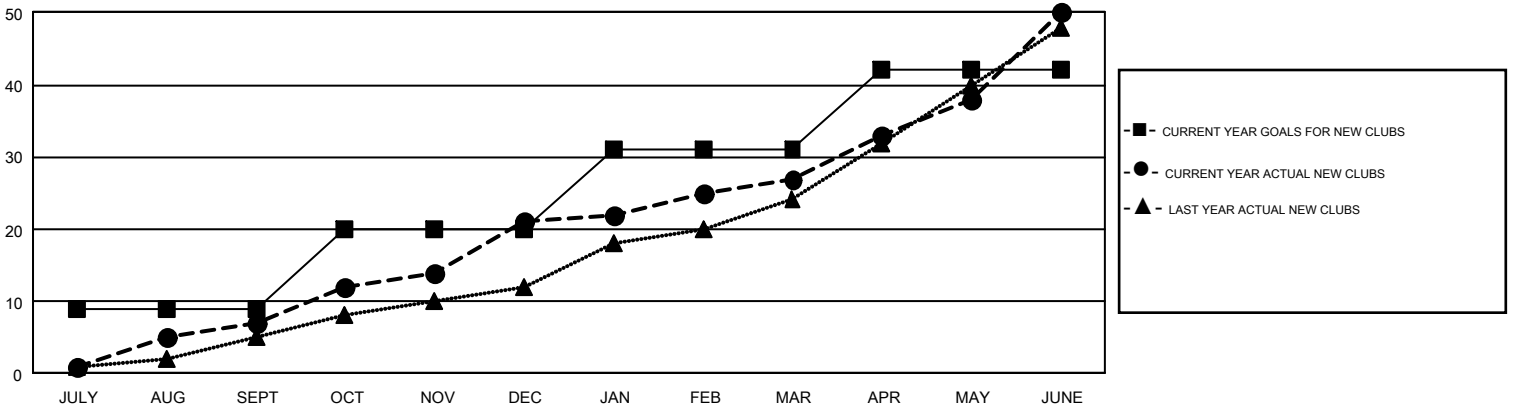
## GMT Constitutional Area 3, Group A

GMT: OPEN

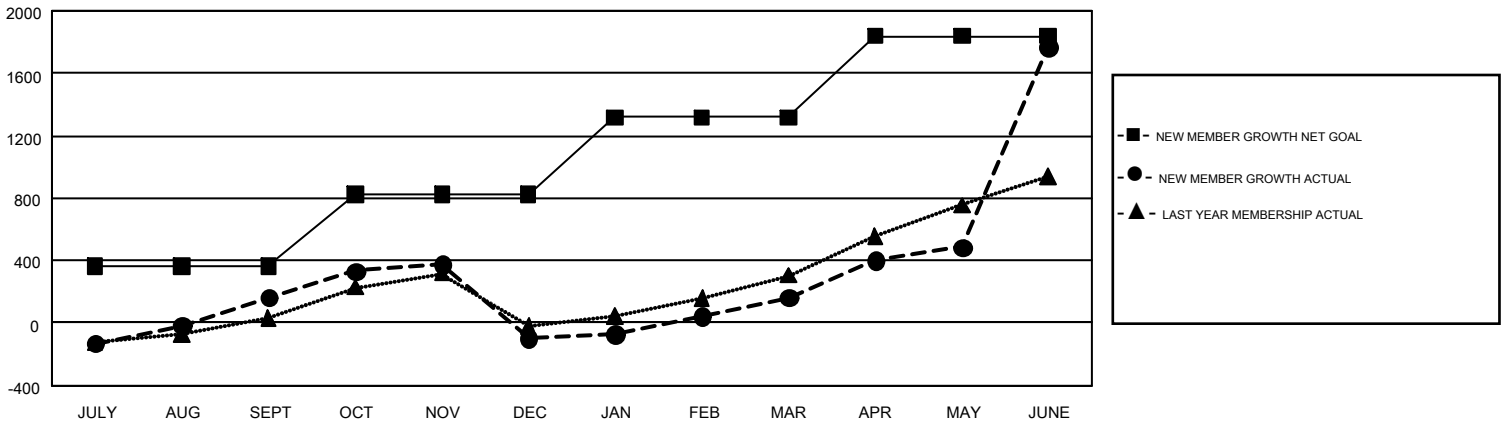
REPORT DOES NOT INCLUDE CLUBS IN UNDISTRICTED AREAS.

Clubs				Members			
RESULTS FOR 2016-2017				RESULTS FOR 2016-2017			
QUARTER	NEW CLUB GOAL	NEW CLUBS	DROPPED CLUBS	QUARTER	NEW MEMBER GROWTH NET GOAL (not reinstated or transfers)	NEW MEMBER GROWTH ACTUAL (not reinstated or transfers)	DROPPED MEMBERS ACTUAL (including transfers)
JULY/AUG/SEPT	9	7	1	JULY/AUG/SEPT	361	849	685
OCT/NOV/DEC	11	14	19	OCT/NOV/DEC	461	882	1,141
JAN/FEB/MAR	11	6	2	JAN/FEB/MAR	497	727	469
APR/MAY/JUNE	11	23	15	APR/MAY/JUNE	520	2,800	1,191

GOALS AND ACTUAL NEW CLUBS CUMULATIVE



GOALS AND ACTUAL MEMBERS CUMULATIVE



DROPPED CLUBS: 36	572 CLUBS OF 761 ADDED 1 OR MORE NEW MEMBERS	<b>GENDER DISTRIBUTION</b>
<b>DROPPED MEMBERS</b>		MALE                    10,989 (54.64%)
DECEASED                    151		FEMALE                    9,123 (45.36%)
CLUB CANCELLED                612	<a href="#">CLICK HERE FOR CUMULATIVE MEMBERSHIP DATA</a>	TOTAL FAMILY UNIT MEMBERS                    6,255
OTHER                            2,722		FAMILY MEMBERS PAYING HALF DUES                    3,607
<b>TOTAL                            3,485</b>		